

# SPECIFICATION

## INSTALLATION OF LIN INNER TANK EMBEDDED PARTS

1	17/11/04	D. LEBOUQC	G. HULIN	S. MARTIN	Modification of § INSTALLATION
0	16/11/04	D. LEBOUQC	G. HULIN	S. MARTIN	First issue / 1 <sup>ère</sup> édition
Rév.	Date	Etabli par Made by	Vérifié par Checked by	Approuvé par Approved by	Objet de la révision Revision's purpose

**SPECIFICATION / SPECIFICATION**

To define the installation work to be performed by the Civil-Engineering contractor

**REFERENCE DOCUMENTS**

- CMP's Civil Engineering Drawing 783-101
- This specification 783-SPANC101

**COMPONENTS SUPPLIED**

CMP will supplied 32 complete sub-assemblies including:

- 32 anchor straps 1a/1d according to folio 783-ST06
- 32 separate base plates 1b according to folio 783-ST06
- 64 nuts HM42 1c

**INSTALLATION (see attached sketch 783-ANC-101)**

1. Drill holes Ø 60 in the existing slab.
2. Perform the grooves according to page 2 of sketch 783-ANC101
3. Installation of anchor straps sub-assembly item 1a/1d
4. Installation of base plate item 1b directly in contact with the existing slab secured by associated nuts item 1c.

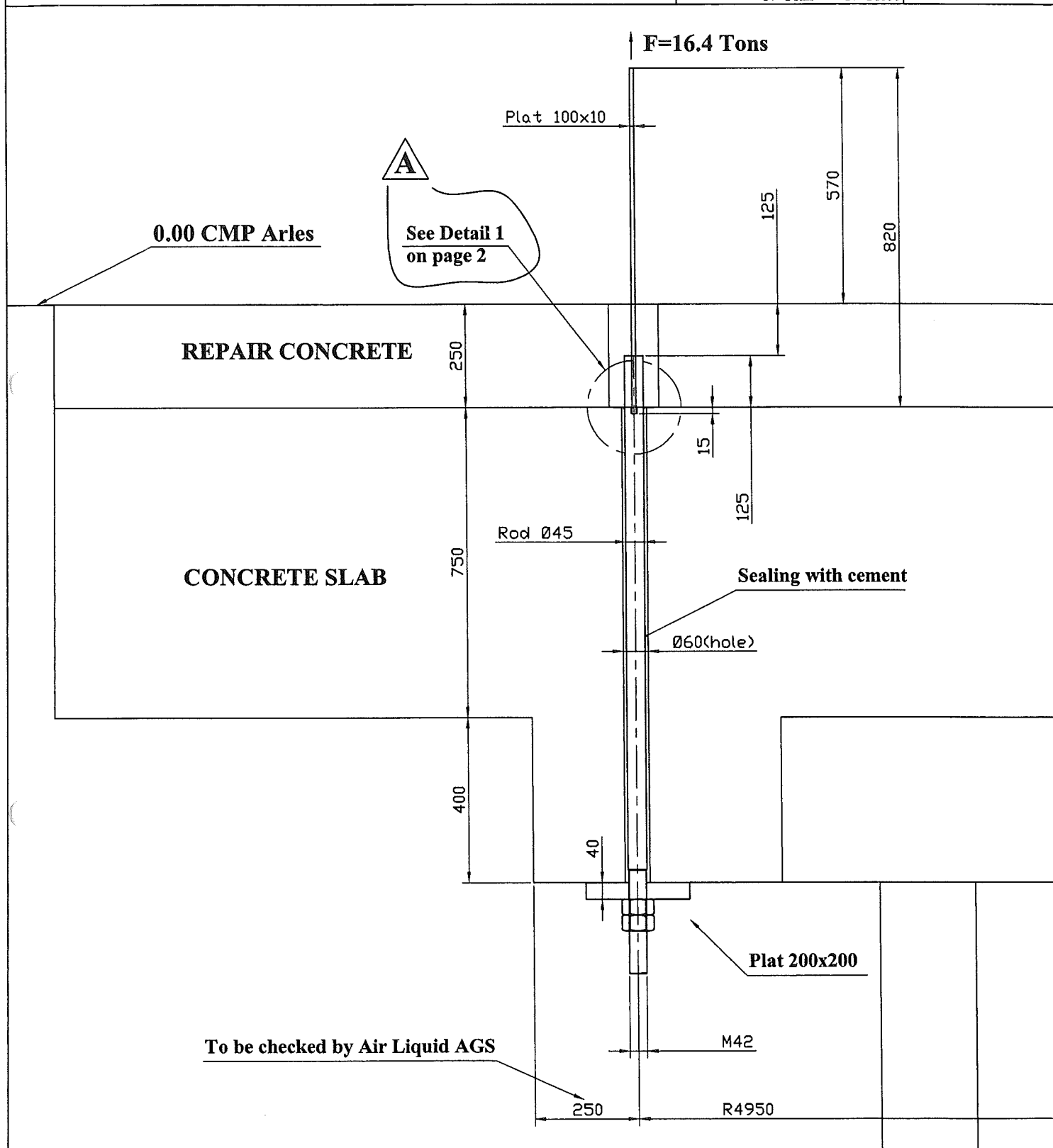
Tightening with a torque of approx 3 mkg.

Before installing this base plate check the concrete surface which shall be levelled and smooth

5. Sealing of the straps in the holes using cement
6. Pouring of the 250mm additional concrete on top of existing slab

**CONTROL**

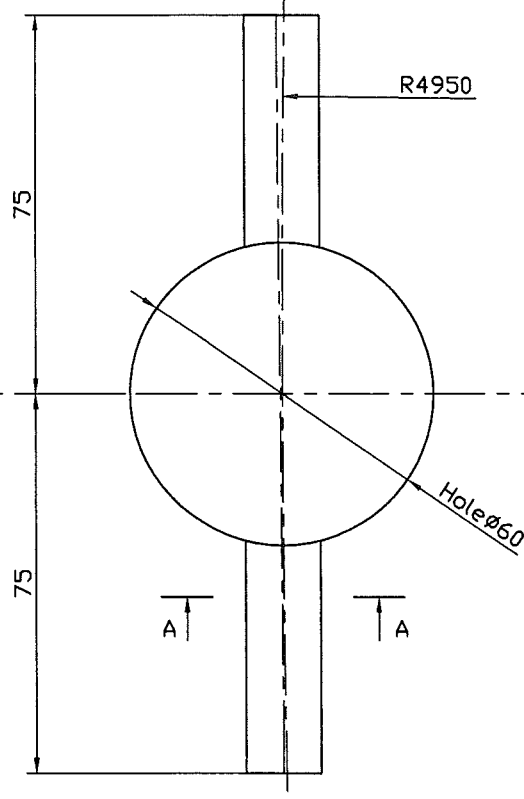
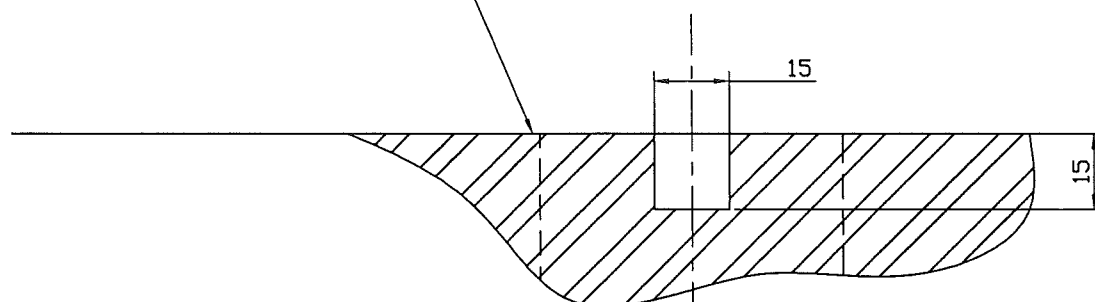
- Check the verticality of the straps before pouring the sealing concrete
- Dimensional according notes 4,6,7,8,9 of drawing 783-101
- Issuing of a report



A	17/11/04	Ajouté Detail 1	A. DUPRESSOIR	G. HULIN
0	16/11/04	Première émission	A. DUPRESSOIR	G. HULIN
Rév.	Date	Objet de la modification	REDACTEUR	VERIFICATEUR

**DOSSIER : 783**
**REP. : 101 - 1**  
 N° Plan

N° Piece

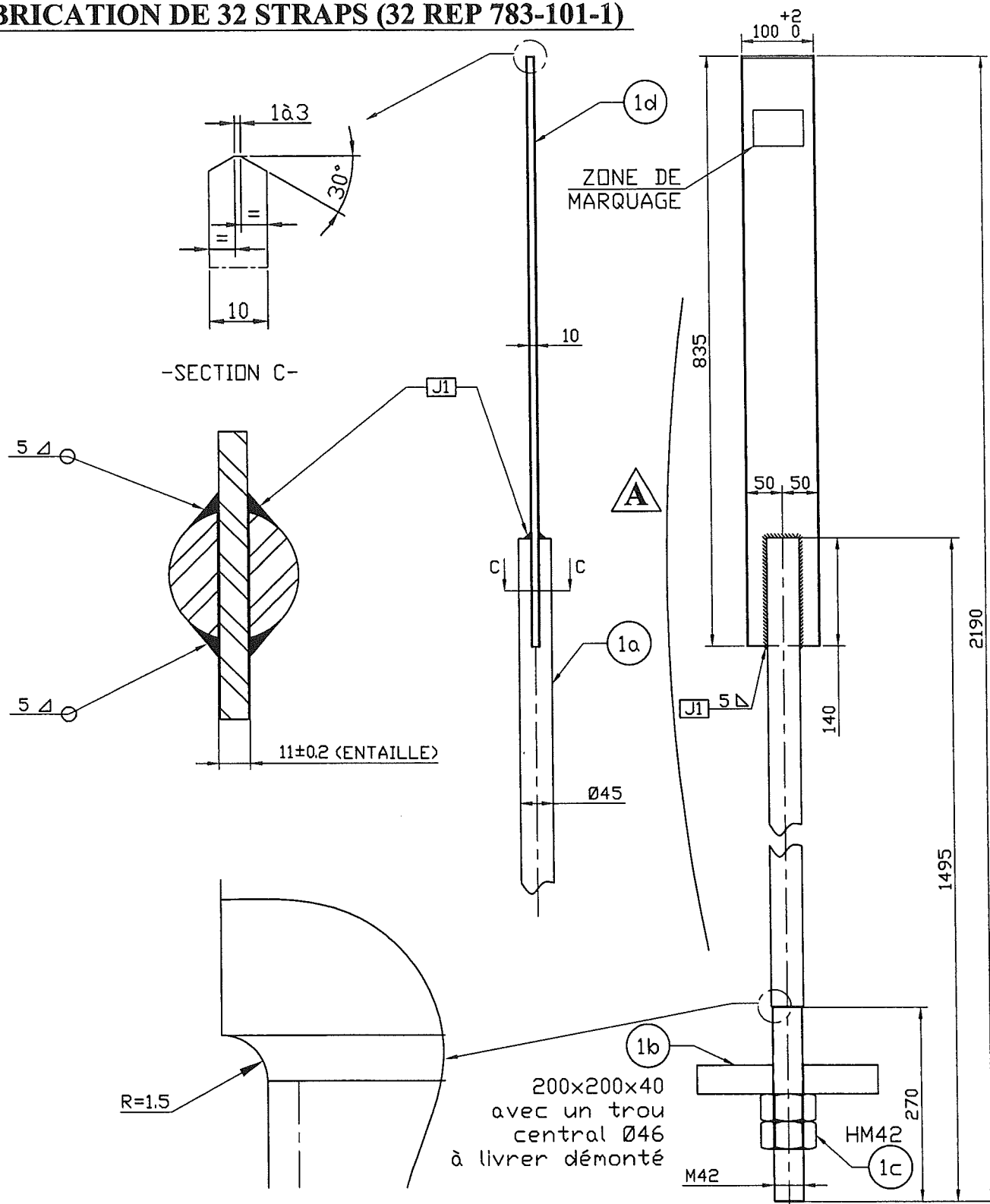
**Page 2/2**
**DETAIL 1**
**SECTION A-A**
**TOP OF EXISTING SLAB**


0	17/11/04	Première émission	A. DUPRESSOIR	G. HULIN
Rév.	Date	Objet de la modification	REDACTEUR	VERIFICATEUR

Ce document est la propriété de CMP Arles. Il ne pourra sans autorisation écrite être utilisé ou communiqué à des tiers, toutes précautions utiles seront prises pour éviter sa divulgation.

*This document is the property of the CMP Arles. It may not be used or transmitted to third parties without the written consent of the company.  
All necessary precautions shall be taken to avoid disclosure.*

## FABRICATION DE 32 STRAPS (32 REP 783-101-1)



A	17/11/04	Modifié longueurs	A. DUPRESSOIR	G. HULIN
0	16/11/04	Première émission	A. DUPRESSOIR	G. HULIN
Rév.	Date	Objet de la modification	REDACTEUR	VERIFICATEUR

**Ce document est la propriété de CMP Arles. Il ne pourra sans autorisation écrite être utilisé ou communiqué à des tiers, toutes précautions utiles seront prises pour éviter sa divulgation.**

*This document is the property of the CMP Arles. It may not be used or transmitted to third parties without the written consent of the company.  
All necessary precautions shall be taken to avoid disclosure.*